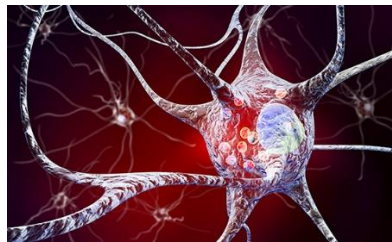
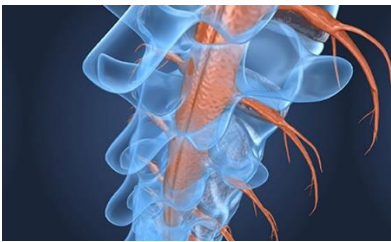




**11 PhD positions**

**within TOBeATPAIN**

**A EU-funded Marie Skłodowska-Curie Innovative Training Network**



TOBeATPAIN will train eleven PhD students on how to investigate the underlying mechanisms of pathological pain in neurodegenerative diseases, musculoskeletal conditions and peripheral neuropathies, with the ultimate aim to delineate novel therapeutic strategies.

TOBeATPAIN is structured around two research areas: 1) pathophysiology of pain in neurodegenerative diseases characterised by neuroinflammation, and 2) pathophysiology of neuroinflammation in chronic pain syndromes.

The strong inter-sectoral (five world leading universities, three biotech SMEs, two large companies, and one non-profit research organisation charity) and the international dimension (four European countries are represented) offers a unique training platform that ensures exposure to different research training environments.

A detailed description of the eleven PhD projects, including compulsory secondments, Supervisors and host organisations, as well as contact persons are available on <https://tobeatpain-itn.net/>

For more information please contact the TOBeATPAIN co-ordinator Prof. Marzia Malcangio, [marzia.malcangio@kcl.ac.uk](mailto:marzia.malcangio@kcl.ac.uk) at the Wolfson Centre for Age-Related Diseases, King's College London, UK